

PROPOSED RESIDENTIAL DEVELOPMENT

lot 175 Swinden Crescent
BLAKES CROSSING SA



ARTIST IMPRESSION FOR DISPLAY PURPOSES ONLY.
(17.02.2011)

PROPOSED RESIDENTIAL DEVELOPMENT

lot 175 Swinden Crescent
BLAKES CROSSING SA



ARTIST IMPRESSION FOR DISPLAY PURPOSES ONLY.
(17.02.2011)

SWINDEN CRESCENT

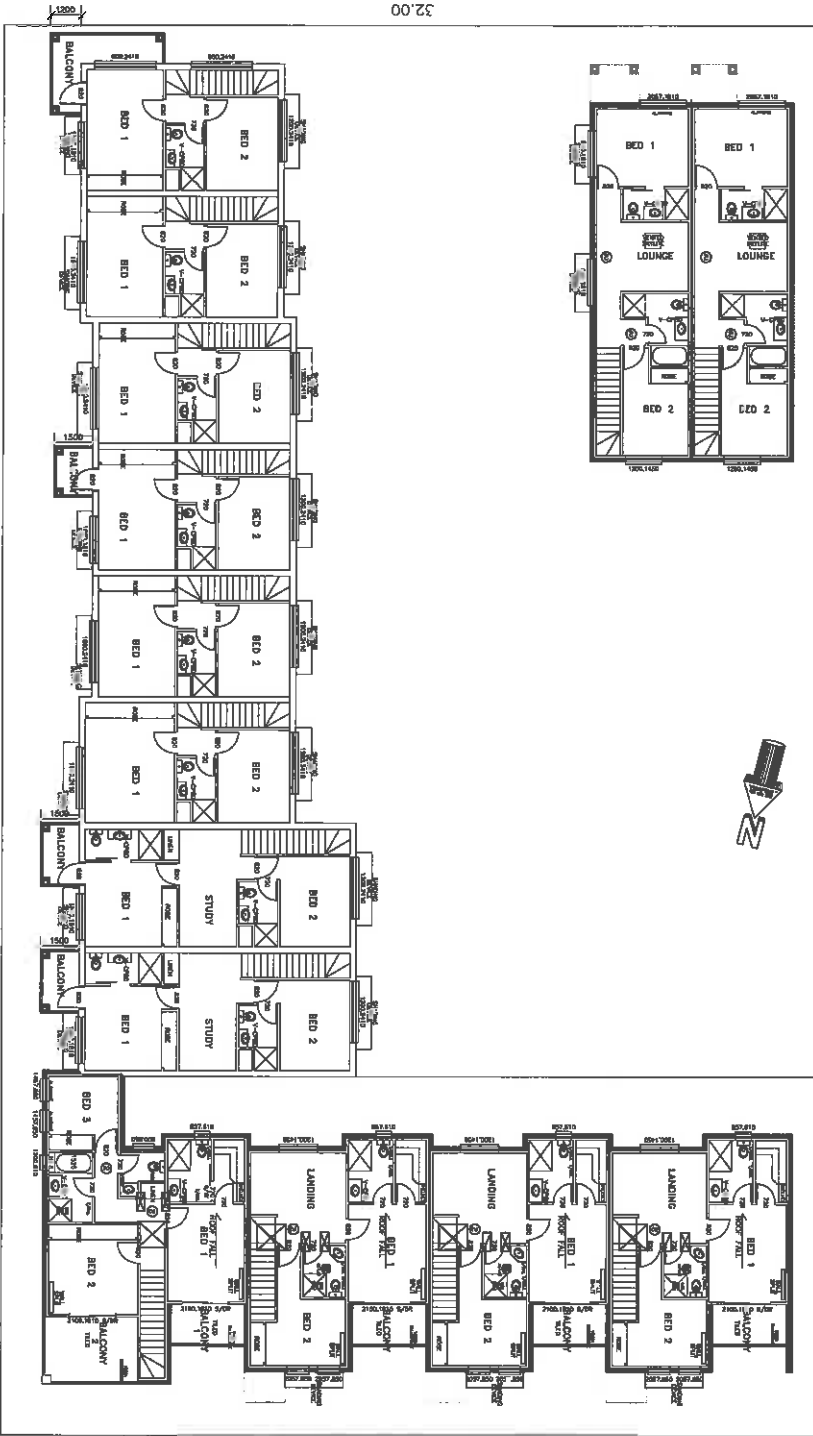


PROPOSED DEVELOPMENT
 For: LOW RIDER Pty Ltd
 At: Lot 175 SWINDEN CRESCENT
 BLAKES CROSSING

DATE: 10/10/2023
 SHEET: 01 OF 01
 PROJECT: 223 NORTH EAST ROAD, BLAKES CROSSING
 A.C.N. 099 114 530

WARNING
 NOT FOR CONSTRUCTION
 FOR INFORMATION ONLY
 NOT TO BE USED FOR CONSTRUCTION

SWINDEN CRESCENT



Unit	Area	Volume	Total
1	LOUNGE 41.00 KITCHEN 18.24 BATHROOM 5.24 TOTAL 64.48		
2	LOUNGE 38.44 KITCHEN 21.24 BATHROOM 5.10 TOTAL 64.78		
3	LOUNGE 38.44 KITCHEN 21.24 BATHROOM 5.10 TOTAL 64.78		
4	LOUNGE 38.44 KITCHEN 21.24 BATHROOM 5.10 TOTAL 64.78		
5	LOUNGE 38.44 KITCHEN 21.24 BATHROOM 5.10 TOTAL 64.78		
6	LOUNGE 38.44 KITCHEN 21.24 BATHROOM 5.10 TOTAL 64.78		
7	LOUNGE 38.44 KITCHEN 21.24 BATHROOM 5.10 TOTAL 64.78		
8	LOUNGE 38.44 KITCHEN 21.24 BATHROOM 5.10 TOTAL 64.78		
9	LOUNGE 38.44 KITCHEN 21.24 BATHROOM 5.10 TOTAL 64.78		
10	LOUNGE 38.44 KITCHEN 21.24 BATHROOM 5.10 TOTAL 64.78		
11	LOUNGE 48.44 KITCHEN 20.24 BATHROOM 5.10 TOTAL 73.78		
12	LOUNGE 48.44 KITCHEN 20.24 BATHROOM 5.10 TOTAL 73.78		
13	LOUNGE 48.44 KITCHEN 20.24 BATHROOM 5.10 TOTAL 73.78		
14	LOUNGE 48.44 KITCHEN 20.24 BATHROOM 5.10 TOTAL 73.78		
TOTAL		55.00	

32.00

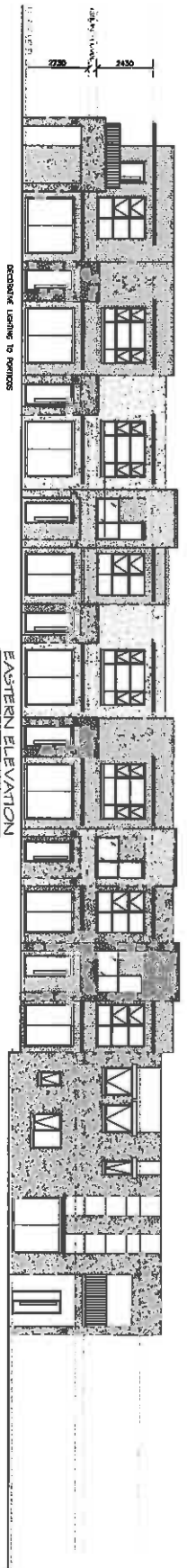
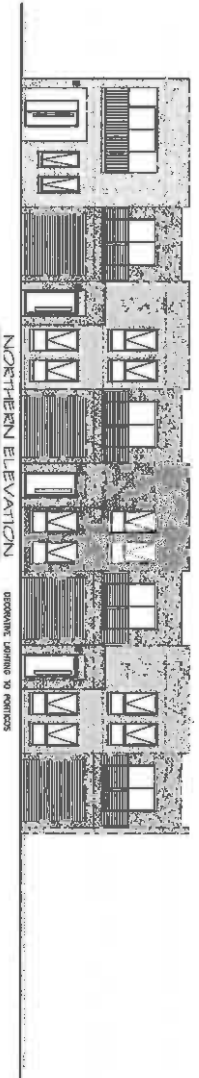
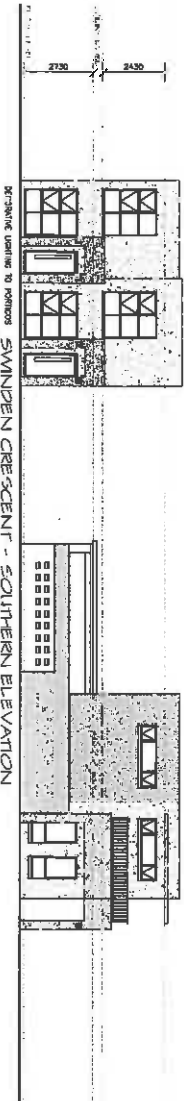
32.00

55.00

PROPOSED DEVELOPMENT
For : LOW RIDER Ply Ltd
At SWINDEN CRESCENT
BLAKES CROSSING

H T P
CHARTERS PROPERTY LTD.
976 NORTH EAST ROAD, WOODBURY, SA
A.C.N. 008 114 830

WARNING
APPROXIMATE DIMENSIONS
PRELIMINARY OVER SHAPE



PROPOSED DEVELOPMENT
 For : LOW RIDER Pty Ltd
 At : Lot 176 SWINDON CRESCENT
 BLANDS CROSSING

DATE	
SCALE	
SHEET	OF

H T B
 DRAFTING SERVICES
 52A NORTH EAST ROAD, WOODBURY SA
 A/CN. 088 114 520 PH. 0883 0483

WARNING
 THESE DRAWINGS ARE
 PRELIMINARY AND NOT TO BE
 USED FOR CONSTRUCTION